

# Countdown to Christmas



Shipshewana | 2023

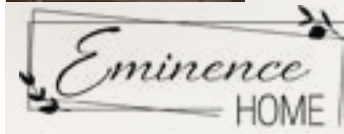




Hosting for the Holidays?  
 Stop by the Shipshewana  
 Official One-Stop Shop  
 Visitor's Center

for local tips, referrals  
 and FREE Coupon Books!

350 S Van Buren Street • 260.768.4008  
 VisitShipshewana.org | small-town-charm



**SHOP OUR UPCOMING SALES!**

**50% OFF FALL**  
 November 13 - 22

**15% OFF JEWELRY & APPAREL**  
 December 4 - 9

**60% OFF FALL; 15% OFF CHRISTMAS**  
 November 24 - 25  
 (Black Fri & Small Business Sat)

**15% OFF TEXTILES**  
 December 11 - 16

**20% OFF STOREWIDE**  
 November 28 (Wana Night Out)

**50% OFF CHRISTMAS**  
 December 18 - 23

**60% OFF CHRISTMAS**  
 December 26 - 30

**INSIDE YODER'S RED BARN SHOPPES**



"Thoughtfully Curated for your Home"

**TOWN & COUNTRY  
 HARDWARE**

325 S Van Buren St.  
 Shipshewana, IN 46565  
 260.768.4991

**Town & Country  
 DOLLAR DISCOUNTS**

December 15<sup>th</sup> & 16<sup>th</sup>

**20% Off Bag Sale**  
 Items that will fit in the bag provided. Some exclusions apply.

**20% Off Entire Store**   
 Valid at Town & Country Dollar Discounts Only.

December 1 - January 6

**20% Off All Regular Priced Toys**

**10% Off Orange Stickered Toys**

 Coupon valid at Town & Country Hardware Only.

**glow**  
 A Christian Bookstore

1055 S. Van Buren St. | Shipshewana  
 260.336.7925

**Open 9 am - 6 pm**

Start a new family music tradition with a lap harp

**SIMPLE SOUNDS**

Downtown Shipshewana  
 1st Floor Davis Mercantile  
 Hours 10 am-5 pm

**260-768-7776**

The perfect instrument for ages 3-103!

# SCHEDULE OF EVENTS

This Page Sponsored by

**SHIPSHEWANA RETAIL MERCHANTS ASSOCIATION**

**SHIPSHEWANA SHOPS** Every week Mon-Sat

**MAP** .....10-11

**FEATURE ARTICLE** .....15

## LIGHTING CEREMONY

Come see Father Christmas and the parade of floats light up town before experiencing the Christmas Tree lighting.

Nov 11

4



## MAJESTIC NOEL Dec 8-16

Two full hours of nonstop Christmas excitement returns. See the Noel singers, Santa, a variety of animals, and more!

20

## COUNTRY CHRISTMAS ON HARRISON STREET

Stroll down Harrison Street to enjoy shopping, activities, food vendors, and Christmas decorations.

Nov 11

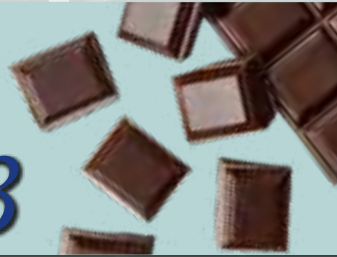
9

## CHOCOLATE DAY

Participate in a chocolate box filling with 100% of proceeds being donated to those in need in the community.

Dec 9

13



## SHIPSHEWANA'S LIGHTS OF JOY DRIVE THRU



7

Nov 17-19 Nov 24-Dec 31

Friday-Sunday Only Seven Days A Week\*

\*(Sun-Thurs 6 p.m.-9 p.m. and Fri-Sat 6 p.m.-10 p.m.)

Admission charged. Visit [www.ShipshewanaLightsOfJoy.com](http://www.ShipshewanaLightsOfJoy.com)

## GINGERBREAD DECORATING COMPETITION

Judging begins at noon and the winners will be announced at 1 p.m.

Dec 16

13

## WANA NIGHT OUT

Sale hours will vary from store to store. Some sales last all day long, while others will just have sales in the evening.

Nov 28

6

## SHIP-CHIC HOLIDAY MARKET

A unique shopping experience with amazing holiday gifts for creative gift-givers! Admission charged. Free parking.

Dec 2

9 a.m.-3 p.m.

16

## ANNUAL SHIPSHEWANA ICE FESTIVAL AND CHILI COOK-OFF

Ice carvers will be drilling and shaving blocks of ice. Taste a variety of chilis and cast your vote for the best one. Be sure to check out the new Wing Sauce Competition on Friday night!

Jan 19-20, 2024

19



## KID'S DAY

Enjoy fun activities for kids of all ages, even kids at heart! Don't miss the chance to meet Santa Claus from 11 a.m.-1 p.m.!

Dec 2 10 a.m.-5 p.m.

17

## PAJAMA SALE Feb 3, 2024

Plenty of deals throughout the stores in town. You must wear your pajamas to get these sweet deals!

14

IT'S BEGINNING TO LOOK A LOT LIKE

# Christmas



16TH ANNUAL

## Lighting Ceremony

The Lighting Ceremony is one of the biggest celebrations Shipshewana hosts each year. People come from all over the country to experience the lighting of the tree in our cozy hometown.

The tree lighting follows the Holiday Light Parade, wherein businesses from the area create a float that will shine in the darkness. These floats travel over a mile along the parade route to brighten up downtown Shipshewana and prepare the crowd for the Lighting Ceremony spectacle. Once the last of the floats has reached the end of the parade route, the focus is turned towards the lighting of the tree, located in front of the Blue Gate Restaurant.

It is encouraged for attendees to arrive early in

order to find parking and a good viewing location. With arriving early, attendees can experience the events scheduled prior to the lighting. From shopping and food trucks along Harrison Street to photo opportunities along Middlebury Street, and others in between, there is plenty to keep the family occupied until the start of the Holiday Light Parade.

For those who are visiting, it's a travel experience. For the locals, it signifies the start of preparing for the Christmas season with hometown events and activities every weekend. From the moment the tree is lit, anticipation starts to build as the countdown to Christmas begins. Visit [www.lightingofshipshewana.com](http://www.lightingofshipshewana.com) for more details.

This Page Sponsored by **BLUE GATE HOSPITALITY**

AND THE GRAND MARSHALS ARE...

# Keith and Doreen Lambright

## SCHEDULE OF Lighting Events

### NOVEMBER 11

#### All Day

Blue Gate Shops, Harrison St., Davis Mercantile, & other town shops are open. Most stores open at 10am and will close at 9 pm. Food vendors throughout town.

#### 3:00pm to 5:00pm

There are plenty of photo opportunities set up throughout Shiptshewana. Explore around town to find your favorite one!

#### 4:00pm & 6:00pm

Live Christmas Music

#### 4:00pm to 7:00pm

Father Christmas will greet children and give gifts. There will also be cookies and hot chocolate at Aunt Millie's for \$3

*Front porch of the Davis Mercantile  
(corner of Harrison St & Main St)*

#### 7:00pm

Light Parade  
*from Flea market Grounds*

#### 7:45pm (approx.)

Lighting Ceremony  
*Immediately after parade at the Main Stage on  
Middlebury Street*



Sales Starting November 1 through November 28.  
**Different Sales Daily! | In-Store and Online**  
 More information in-store and on Facebook.  
 133 Harrison St. | Shipshewana, IN



**Now is the perfect time to open a Christmas Club Account for the next Holiday Season.**

*We can help you set up an automatic transfer from a First State Bank Checking or Savings Account. The entire savings, plus interest, will pay out Mid-October 2024 and be transferred back into a First State Bank Account of your choice.*



**BFirst.bank** Member FDIC



*Taste the Difference during the Holidays!*

**Prime Rib • Hams • Turkeys  
 Gift Boxes**



**Hours: Monday-Saturday 8:00am-5:00pm**  
 (260)768-4715  
 435 S Van Buren St. (SR 5) • Shipshewana

# Wana NIGHT Out

**TUESDAY,  
 NOVEMBER 28**

You will not want to miss these store deals throughout Shipshewana! Stores will have specials available and will be open late. Sale hours will vary from store to store.

Get your Christmas shopping done early this year, and do some shopping for yourself!

Watch for details in the December issue of *The Hometown Treasure* and the November 16 issue of *The People's Exchange*.





# Drive-Thru

Shipshewana's Christmas Light Drive-Thru Experience returns for its sixth season, with more than two million LED Christmas lights displayed in various light scenes travelling over a mile-and-a-half long. The Lights of Joy Drive-Thru will commence on opening weekend, November 17-19.

The Shipshewana Trading Place and Blue Gate Hospitality are partnered with Winterland, Inc. to bring the drive-through light experience to town once again. The entrance to the experience will be located on the grounds of the Shipshewana Flea Market on SR 5. Attendees will be taken through the light display that is set up in the Shipshewana RV Park. Here they will wind back and forth through the various displays and then exit the display onto CR 200 N.

Following the opening weekend from

November 17-19, the display will be open seven days a week from November 24 through December 31 (with the exception of December 25 and 26). The admission per vehicle is just \$20, and open hours are Sunday through Thursday from 6 to 9 p.m., and Friday and Saturday from 6 to 10 p.m. Tickets will be available at the gate upon entry, or they may be bought ahead of time online at [ShipshewanaLightsofJoy.com](http://ShipshewanaLightsofJoy.com).

Bring the whole family, or hop in the car yourself, and see these beautiful lights brighten up the dark.

Sure to bring fun and excitement for all ages, you do not want to miss this Christmas tradition! And even better, you can view the displays from the warmth of your vehicle.

For more information on Shipshewana's Lights of Joy, visit [ShipshewanaLightsofJoy.com](http://ShipshewanaLightsofJoy.com) or view the Shipshewana's Lights of Joy page on Facebook.



This Page Sponsored by

**SHIPSEWANA TRADING PLACE AND BLUE GATE HOSPITALITY**

# A BLUE GATE CHRISTMAS

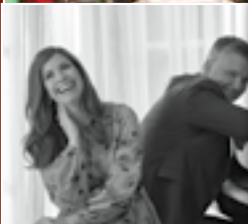
*Blue Gate Theatre Highlights*



**Daniel O'Donnell**  
Christmas and More  
Nov 27 - Dec 5



**Dailey & Vincent**  
Christmas  
Nov 30



**Christmas with the Gettys**  
Dec 6



**Gaither Homecoming Christmas**  
Dec 7



**Kenny G**  
Dec 8



**Celtic Angels Christmas**  
Dec 13



**Mannheim Steamroller Christmas**  
Dec 15

## 2023 Full Holiday Concert List

Nov 9- Dec 30	The Christmas Candy Caper	Nov 27-Dec 9	Salute to the Stars: Country Christmas
Nov 9	Colt Ford & Creed Fisher	Nov 30	Dailey & Vincent Christmas
Nov 10	Trace Adkins	Dec 6	Christmas with the Gettys
Nov 10	Chuck Wagon Gang	Dec 7	Gaither Homecoming Christmas
Nov 15	Blackberry Smoke	Dec 8	Kenny G
Nov 16	Three Dog Night	Dec 9	Sawyer Brown
Nov 17 -Dec 31	Lights of Joy - Light Drive Thru	Dec 13	Celtic Angels Christmas
Nov 17	Bret Michaels - Parti-Gras 2023	Dec 14	The Lettermen
Nov 17-18	Doug Church: Elvis Beyond '77	Dec 15	Mannheim Steamroller Christmas
Nov 18	The Return of Emerson, Lake & Palmer	Dec 28	Buckets N Boards
Nov 24	Gatlin Brothers Christmas	Dec 29	Parmalee
Nov 25	Wheel of Fortune Live	Dec 30	Mike Super - Special Holiday Event
Nov 27-Dec 5	Daniel O'Donnell Christmas and More		

### Preorder Your Holiday Meals & Pies!

Place your heat and serve meal order at the Bakery now! With over 20 pie varieties available, including: Cherry, Dutch Apple, Peanut Butter, Pecan, Pumpkin, Red Raspberry Cream & More!



**TheBlueGate.com | 260.768.4725**





## COUNTRY CHRISTMAS ALONG Harrison Street

Get in the spirit of Christmas on Harrison Street while waiting in anticipation for the Lighting Ceremony on November 11. The entire street will be blocked off to traffic to allow you and your family to walk freely and explore the world of shops on Harrison.

There will be plenty of food trucks and vendors on the street, with a few new main course options available this year. As with last year, the shops along Harrison will set up several photo opportunities to stop at in-between shopping. Don't let the excitement on the street distract you from the fun inside the stores!

The Harrison Street shops will be open all day to help you with your Christmas shopping, and even have a couple activities inside available for shoppers.

One such activity is the Reindeer Scavenger Hunt! Beginning on November 10, pick up your Scavenger Hunt Entry Passport at Cornucopia. Explore the shops on the street to search for the reindeer that are hidden

inside. As you locate the reindeer within each store, the shop keeper will stamp your passport.

Once your passport is complete, you can enter a drawing for a gift card to use at any of the participating stores! The last day to take part in the Reindeer Scavenger Hunt will be December 16.

The shops on Harrison Street will also be hosting a new event this year for customers to take part in, starting on November 11. In the Christmas Tree Competition, each store on Harrison will decorate their own Christmas Tree and customers can vote on their

favorite tree.

In order to vote, customers may donate non-perishable food items, grocery gift cards, money, or a gift wish item labelled on the tree. At the end of the competition on December 16, all donations will be collected and transported to Westview, who will distribute all proceeds to families in need within the community.

Between all of the fun activities and the opportunity to give to those in need, you do not want to miss all of the excitement happening on Harrison Street this year!





**Van Buren Hotel** | 260-768-7780 • 1 mile

**Shipshewana North Village** • 0.7 mile  
 Lake City Bank • Shipshewana Pizza  
 Shipshewana Harness & Supplies  
 Country Corral • Troyer's Saddlery & Carriage  
 Dutch Blessing Floral • Dana & Co.  
 Shiffman Clinic of Chiropractic

**\*Please note:  
 Map is not to scale.**

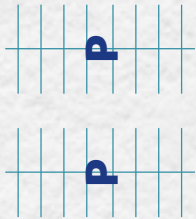
**North-Northeast of Shipshewana** • <1.5 mile  
 Forks County Line Store • Mt. Wrench  
 Wana Feed • Shipshewana Fitness & Nutrition  
 The Cove • Stone Horses

**El Zorrito 2**

**General Store**  
 Luggage, tools, gifts, and more.

**B&D Tools**

**Farmers State Bank**



WALNUT ST.

MAPLE ST.

**Marathon Gas**

**Country Yard Outlet**  
 Flags, home/garden décor, pet supplies.

**A Thankful Heart**  
 Country primitives.

DEPOT ST.

**Aunt Millie's**  
**Back Home Again**  
**Dentzel Carousel**  
**Head Over Heels**  
**JoJo's Pretzels**

**Hubbard Milling**



HARRISON ST.



N. HARRISON ST.



NORTH ST.

ALLEY

**Library**  
 Come get lost in a book.

DEPOT ST.

**Simple Sounds**  
**The Lang Store**  
**Truly Yours**  
**Village Boutique**  
**Weaver's Furniture**

**Red Wagon**  
**Riegsecker Cabinet**  
**Sarah Davis, Ltd**  
**Seasons**  
**Shipshe Casuals**

**Davis Mercantile Stores**

MAIN ST.

**Davis Mercantile**  
 20 Stores, a Carousel, and 1 Big Tree.

ALLEY

**Family Time Variety**

**Dips Ice Cream**  
**Hostetler's Store**  
 Supplies, books, gifts.

**Smokehouse Grill & Supply**

WALKWAY

**Teaberry on Morton**  
**Cherry Pickers**  
 Reclaimed furnishings.

ALLEY

**Sherger's Jellies and Jams**

**Bread Box**

MORTON ST.

**Stutzman Lawn & Garden**

**Community Health Clinic**

**Town Hall Wolfe Building**

**Wolfe Pavilion**

DEPOT ST.

**Original Train Depot** **Shipshewana Historical Society**

MAIN ST.

**Flagstar Bank**  
 Offices of the Shipshewana Retail Merchants Association upstairs  
 260-768-7589  
 www.shipshewana.com  
 director@shipshewana.com  
 Follow us on Facebook

**Post Office**

ALLEY

**Riverwood Pottery**

**Rebecca Haarer Arts & Antiques**  
 An eclectic "antiques-plus" shop.

**Fisher's Antiques**  
 A true antique shop since 1987.

**Courtyard of Arts**

**Nell's Massage**

**You-nique Boutique**

**Rainbow's End**  
 Antiques and collectibles.

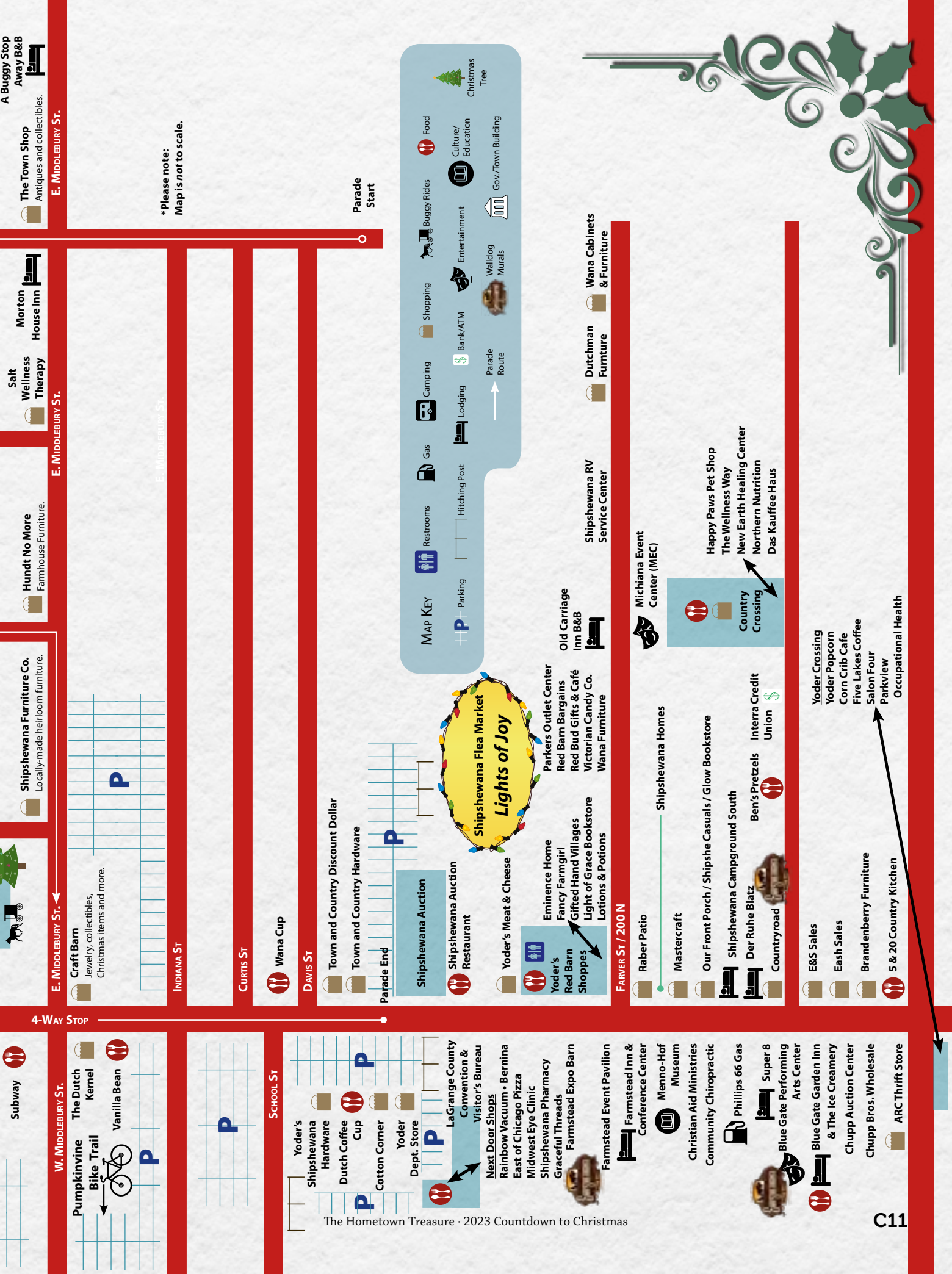
**Four Seasons Diner**

**Once in a Blue Moon**  
 Vintage clothing.

N. VAN BUREN ST. / SR 5

N. VAN BUREN ST. / SR 5

N. VAN BUREN ST. / SR 5



\*Please note:  
Map is not to scale.

**MAP KEY**

- Parking
- Restrooms
- Hitching Post
- Gas
- Camping
- Bank/ATM
- Shopping
- Buggy Rides
- Food
- Culture/Education
- Gov./Town Building
- Christmas Tree
- Parade Route
- Walldog Murals
- Entertainment

Parade Start

**W. MIDDLEBURY ST.**

- Subway
- Pumpkinvine
- Bike Trail
- Vanilla Bean

**E. MIDDLEBURY ST.**

- Shipshewana Furniture Co. Locally-made heirloom furniture.
- Hundt No More Farmhouse Furniture.
- Salt Wellness Therapy
- Morton House Inn
- The Town Shop Antiques and collectibles.
- A Buggy Stop Away B&B

**INDIANA ST**

**CURTIS ST**

- Wana Cup

**DAVIS ST**

- Town and Country Discount Dollar
- Town and Country Hardware

**Parade End**

- Shipshewana Auction
- Shipshewana Restaurant
- Yoder's Meat & Cheese
- Shipshewana Flea Market 'Lights of Joy'
- Parkers Outlet Center
- Red Barn Bargains
- Red Bud Gifts & Café
- Victorian Candy Co.
- Wana Furniture
- Eminence Home
- Fancy Farmgirl
- Gifted Hand Villages
- Light of Grace Bookstore
- Lotions & Potions
- Yoder's Red Barn Shoppes
- Old Carriage Inn B&B
- Shipshewana RV Service Center
- Dutchman Furniture
- Wana Cabinets & Furniture

**FARVER ST / 200 N**

- Raber Patio
- Mastercraft
- Our Front Porch / Shipshe Casuals / Glow Bookstore
- Shipshewana Campground South
- Der Ruhe Blatz
- Countryroad
- Shipshewana Homes
- Ben's Pretzels
- Interra Credit Union
- Michiana Event Center (MEC)
- Country Crossing
- Happy Paws Pet Shop
- The Wellness Way
- New Earth Healing Center
- Northern Nutrition
- Das Kaufee Haus

- E&S Sales
- Eash Sales
- Brandenberry Furniture
- 5 & 20 Country Kitchen
- Yoder Crossing
- Yoder Popcorn
- Corn Crib Cafe
- Five Lakes Coffee
- Salon Four
- Parkview
- Occupational Health

**SCHOOL ST**

- Yoder's Shipshewana Hardware
- Dutch Coffee Cup
- Cotton Corner
- Yoder Dept. Store
- LaGrange County Convention & Visitor's Bureau
- Next Door Shops
- Rainbow Vacuum - Bernina
- East of Chicago Pizza
- Midwest Eye Clinic
- Shipshewana Pharmacy
- Graceful Threads
- Farmstead Expo Barn
- Farmstead Event Pavilion
- Farmstead Inn & Conference Center
- Menno-Hof Museum
- Christian Aid Ministries
- Community Chiropractic
- Phillips 66 Gas
- Super 8
- Blue Gate Performing Arts Center
- Blue Gate Garden Inn & The Ice Creamery
- Chupp Auction Center
- Chupp Bros. Wholesale
- ARC Thrift Store



FROM THE FOUNDATION  
TO THE ROOF OF YOUR  
HOUSE, SHOP, OR BARN,  
*We are here to help you!*

[WWW.ALPHABUILDINGCENTER.COM](http://WWW.ALPHABUILDINGCENTER.COM)

**FROM JUST A SCRIBBLE ON A NAPKIN**  
**WE CAN HELP YOU!**

**CONCEPT** We plan out your design from scratch or a simple sketch

**VISUALIZATION** Create full color print of your design/project

**REVISION** Make revisions as needed

**FINALIZATION** Complete print with estimated list of materials

Set up an appointment with our **Design Center** today! Call us below or visit our site.

**WE HAVE IT ALL!**

**ALPHA BUILDING CENTER, INC.**  
[WWW.ALPHABUILDINGCENTER.COM](http://WWW.ALPHABUILDINGCENTER.COM)

	<p><b>SHIPSHEWANA</b>        (260) 768-4410        0855 N SR, 5        Shipshewana, IN 46565</p>	<p><b>NOTTAWA</b>        (269) 467-4800        26250 M-86        Sturgis, MI 49091</p>	<p><b>NAPPANEE</b>        (574) 773-7787        8270 W 1350 N        Nappanee, IN 46550</p>
--	--	--	---



# Chocolate WALK

Join in on the hunt for chocolate in this year's Chocolate Walk on December 9!

Starting at 10 a.m., head over to Aunt Millie's Candy Store in the Davis Mercantile to pick up an empty limited edition candy box to fill. Then it's time to search for the participating stores to fill your box with a variety of sweets. All participating stores will be open from 10 a.m. to 5 p.m. that day.

Participating stores will be marked with Chocolate Walk signage, and they'll have plastic gloves to handle all sweets.

The suggested donation price per box is \$25. All proceeds raised from the Chocolate Walk will go to benefit a local family or individual in need. Only 100 chocolate boxes will be sold this year, and you do not want to miss out on this sweet event!

# Gingerbread House COMPETITION

Join in on the fun and participate in this year's Gingerbread House Competition. Gather a team, or take on the challenge yourself, and decorate your own gingerbread house. On December 16, bring your completed gingerbread house to the third floor of the Davis Mercantile to enter the competition.

All entries must be submitted by noon, when the judges will evaluate each submitted gingerbread house and announce the winners at 1 p.m. First and second place winners will be announced for the two divisions: one for ages 15 and under and the other for ages 16 and up. Houses will remain on display until New Year's Eve.

*Ages 15 and Under*  
**First \$150 Second \$50**

*Ages 16 and Up*  
**First \$150 Second \$50**

*All participants receive a small gift.*



*This Event Sponsored by*  
**SHIPSHEWANA RETAIL MERCHANTS ASSOCIATION**

Countdown to  
**Christmas**  
 2023

Sponsored by:

**Midwest**  
 EYE CONSULTANTS

Charles Craig, O.D.  
 Thomas Morlan, O.D.

*Happy Holidays*  
 from your hometown  
 experts in eye health

350 S. Van Buren, Suite D (260) 768-7721  
 (in the Nest Dooce building)

The Dutch Kernel  
 217-259-8253  
 dutchkernel@shipshe.com  
 Open 10-6  
 Monday through Saturdays

# Pajama SALE

**SATURDAY,  
 FEBRUARY 3, 2024**

The early bird gets the worm! Stores around Shipshewana will be opening early in the morning on February 3 to provide you with great deals. The catch? You must wear PJs to get these deals!

This year, there will be a pajama contest to those who attend, with a few different categories available to compete in. The winner in each category will win a large giveaway. You will not want to miss out on this opportunity!

Stayed tuned for more information in the January issue of *The Hometown Treasure* and the January 26 issue of *The People's Exchange*.



---

---

# Worth It

---

---

By: Chloe Lovell

Christmas is a magical season that we begin preparing for earlier and earlier each year. Once we pass Halloween and Thanksgiving, the year picks up significantly. Work gets busier, taking care of your physical and mental health gets harder, and keeping up with home chores becomes a challenge.

Each year, so much work goes into maintaining our everyday routine, while adding on Christmas decorating, cooking, baking, shopping, and more. It takes a lot of hard work to make the season as magical as it can be.

As a kid, one of the most exciting indications of Christmas, and the step that took the most effort, was getting the tree. Really, it was a triathlon. The first part would be jumping in the car bundled up in our Christmas gear and going to the tree farm to pick out the perfect tree. This included a full evaluation of the tree's height, shape, fullness, trunk straightness, and scent. Once we had found the one, we'd strap it to the car and bring it home.

The second segment, and the hardest part, was getting the tree inside the house. My dad would trim a few pieces in the driveway to make the transition inside a little easier, and to make sure the tree wouldn't be smushed into the ceiling.

We would lay the tree down on a blanket to keep needles from going everywhere, and it took all five of us to get the tree from the front door, down the stairs to the

basement, and upright into the tree stand. It took many rounds of my dad asking, "Does it look straight?" and one person stepping back to see if the tree is leaning too far to one side before we all conceded and decided that a small lean is good enough.

The third segment, decorating the tree, was the home stretch—and the most fun! After my dad changed out the burnt bulbs, my mom would help my sister and I put the lights on the tree. Breaking out boxes upon boxes of ornaments, we'd sift through the assortment to put on our favorites.

With old fashioned bulbs, shiny new ones, homemade ornaments, and Barbie toy ornaments, we'd throw on the tinsel and my dad would put the star on top of the tree. Finally, it was done.

We would shut off the lights and close the blinds so it was fully dark, and then plug in the lights to see our tree standing in her glowing

glory.

We could finally rest as we stood there together, taking in the lights and the (excessive) decoration; all the hard work to get the tree inside, positioned just right, and decorated perfectly was worth it.

Despite the struggles faced during the year, and the extra work put in during the Christmas season, people often forget to step back and rest. We rush to get everything done on time, and before we know it Christmas has come and gone; we're left cleaning up to prepare for New Year's wondering where the time went.

Life gets busier during the Christmas season, but it's the perfect time to take a break from the hard work and recognize your effort during this season—and the overall year. Take a moment to rest with family and friends, to reflect on the work you've put in this year and give yourself credit. All your hard work is worth it.



# SHIP-CHIC CRAFT & VINTAGE Holiday Market

*This Page Sponsored by*  
**SHIPSHEWANA TRADING PLACE**

Looking for crafts, baked goods, Christmas items or holiday gifts? Make plans to be in Shipshewana for the Ship-Chic Craft & Vintage Holiday Market on Saturday, December 2, from 9 a.m.—3 p.m. inside the Shipshewana Auction Miscellaneous & Antique Building.

The show is a curated indoor pop-up market featuring amazing products for DIY lovers, the Pinterest-obsessed, creative gift givers, small business supporters, or anyone who just wants

a unique holiday shopping experience.

The entire building will be filled with nearly one hundred exceptional vendors who offer holiday gifts, vintage items, home decor, crafts, clothing, accessories, beauty products, jewelry, baked goods, signs and more! Food and refreshments will also be available. It will be a day of amazing holiday shopping for everyone on your Christmas list... including yourself! Plus, the first 100 shoppers through the

doors will receive a free Shipshewana reusable shopping tote, four of which include a \$25 shopping certificate redeemable at the market!

Admission is \$5 at the door. Kids fourteen and under are ALWAYS free, and there is no charge for parking.

For admission or vendor information, visit [www.shipshewanatradingplace.com](http://www.shipshewanatradingplace.com) or call the Shipshewana Auction & Flea Market at 260-768-4129.





# Kids Day

~ SANTA COMES TO TOWN ~

Help your kids celebrate Christmas by taking them to Kids Day on December 2.

Located on the third floor of the Davis Mercantile, there will be plenty of activities available from 10 a.m. to 5 p.m. to get kids excited about Christmas, at no charge.

Some of the activities that kids can enjoy include coloring pages, decorating cookies, making their own ornament, and writing a letter to Santa. Santa Clause himself will join in on the Kids Day fun between 11 a.m. and 1 p.m. to visit with each child and to hand out goodie bags to the kids.

Sponsors for this event are Red Wagon Toy Store, Aunt Millie's Candy and Nut Shop, JoJo's Pretzels, Kitchen Cupboard, Davis Mercantile, Shishewana Carousel, Shishewana Retail Merchants Association, E&S Sales, and the LaGrange County Convention & Visitors Bureau.



*This Page Sponsored by* **SHIPSHEWANA RETAIL MERCHANTS ASSOCIATION**



Your source for Holiday Baking Supplies

- Holiday Sprinkles
- Candies
- Nuts
- Melting Chocolate
- Cappuccino Mixes
- Meats & Cheeses
- Party Mix Supplies

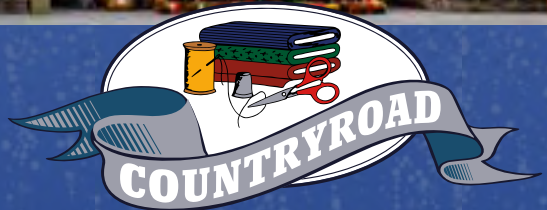
Melting Chocolate



Happy Holidays



1265 N SR 5 • Shipshewana, IN 46565  
 M - F 7:30am - 5:00pm • Sat. 7:30am - 3:30pm • Closed Sun.  
 260-768-4736



Fabrics • Shoes • Boots • Apparel

Holiday Gifts

- Toys
- Games
- Books
- Blanket Fleece

Regular business hours:  
 Monday – Friday 8 – 5,  
 Saturday 8 – 3:30

1205 South Van Buren St  
 Shipshewana, IN  
 P: 260-768-7804 • F: 260-768-7801



# ICE Festival

JANUARY 19-20, 2024



It's almost time for Shipshewana's Annual Ice Festival! Celebrating its 16th year, the Ice Festival hosts one of the largest ice carving events in the area.

Shipshewana businesses provide space in front of their stores for Ice Carvers to drill and shave blocks of ice into artful masterpieces. Sponsors purchase these large blocks of ice to be carved, sometimes submitting a design for the carver to create with the ice block and other times allowing the carver free reign over their creation.

It is an amazing spectacle to see professional carvers work their magic to transform a piece of ice to an incredible design. Take a walk around town to see the wonders the carvers are creating. The sponsored blocks will be carved all day on Friday, leading up to the new Wing Sauce Competition event happening from 4 p.m. to 8 p.m.

that night, or until sold out.

On Saturday, the remaining ice blocks will be carved, with competition ice carvings occurring behind the Davis Mercantile at 11 a.m. The annual Chili Cook-off will also be happening Saturday morning, starting at 11 a.m. until sold out.

Both the Wing Sauce Competition and the Chili Cook-Off will take place at the Smokehouse Grill & Supply store located on Morton Street. Make sure to stop by to try a variety of chilis and homemade wing sauces, and vote for your favorite recipes.

Another component of the annual Ice Festival is the tradition of the Ice Festival Pin. Every year since 2009, students in the Intro to Art class at Westview compete to create the winning pin design. This year, Payton Hargrove placed first in the pin design contest. Second place was awarded to Grace Yoder and third place to Jillian Bontrager. Keep an eye out for the opportunity to purchase the Ice Festival pin for 2024 to take advantage of deals and discounts throughout January!



## Chili COOK-OFF

&

## WING SAUCE Competition



*This Page Sponsored by KING CORP*

# SHIPSHEWANA MAJESTIC PRESENTS

# Noel

"A Celebration of Christmas"

*Dinner*  
**with PRE SHOW**  
**Niels Duinker**



**Professional Juggler & Comedian**



**NEW THIS YEAR!**  
 Get VIP access to Santa and come tell him yourself! Picture taking is welcomed for the children or the whole VIP family!

**UPGRADE TICKETS!**  
**TO VIP:** get up close and personal with the animals backstage! Take pictures with the cast and become part of the NOEL family.  
 VIP Experience Ticket prices:  
 Adult: \$20 • Child: \$10



**DINNER & PRESHOW:**  
 Adult: \$20 • Child 11 & Under: \$10

**MENU**  
 Cranberry Salad • Turkey & Gravy  
 Ham • Mashed Potatoes • Green Beans  
 Garlic Biscuits • Chocolate Lava Cake with Peppermint Topped Ice Cream



# MICHIANA

EVENT CENTER

**TICKETS STARTING AT**  
**ADULT: \$34.95 • CHILD 4-11 \$19.95**  
 \*3 & UNDER FREE \*Must be able to sit on adult lap  
**CALL TODAY FOR RESERVATIONS!**

**December 2023**

sun	mon	tue	wed	thu	fri	sat
					1	2
3	4	5	6	7	8	9
10	11	12	13	14	15	16
17	18	19	20	21	22	23
24	25	26	27	28	29	30
31						

**7:00 PM**

**1:00 PM & 7:00 PM**

**SHOW TIMES**

*Doors open 2 hours before showtime.  
 Serving meal 90 minutes before showtime.*

**DEC 8-16, 2023**

No shows on the 10th or 11th

**TICKET BOX OFFICE 260-768-4990 MICHIANAEVENTS.COM**